

Nitrous Oxide Sedation Systems INSTALLATION

FLUSH MOUNT ZONE VALVE ASSEMBLY 9000-1 OR C9000

INSTALLATION PROCEDURE

PORTER INSTRUMENT COMPANY, INC.

245 TOWNSHIP LINE RD. P.O. BOX 907 HATFIELD, PA 19440-0907 USA [215] 723-4000 / FAX [215] 723-2199

FLUSH MOUNT ZONE VALVE - MODEL 9000-1 AND C9000

INSTALLATION PROCEDURE

1. With black bezel and lexan window removed, position chassis assembly in place. See Figure 1.
2. Check to insure that chassis is level. Nail main chassis to studs using drywall nails (not supplied). See Figure 1.
3. Silver solder (Braze) gas lines in place. Ref. NFPA Gas and Vacuum Systems Code Requirements.
4. Feed signal cable through hole "A" and plug into signal distribution jack. See Figure 1.

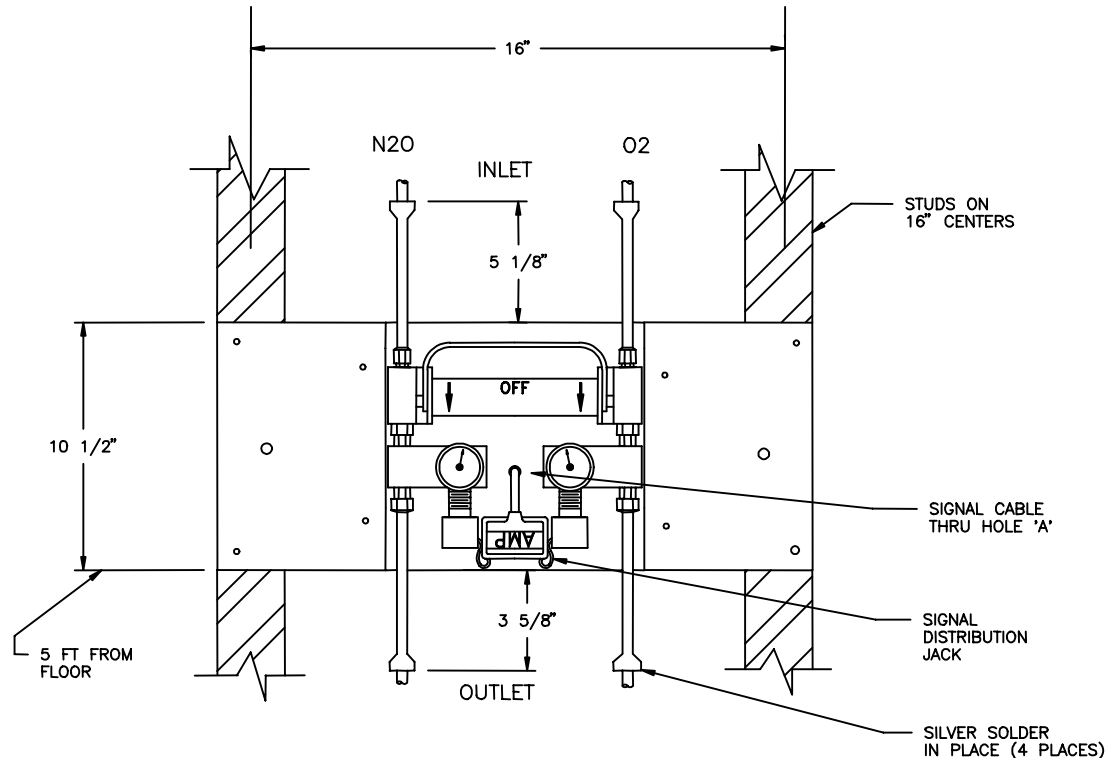


FIG. 1

5. System must now be pressure tested per NFPA Gas and Vacuum Systems Code pressure test requirements.
6. Dry wall is now to be installed and painted.
7. Cutting opening: See Figure 2.
 - A) Width to be cut flush with width of fixed (main) Chassis. Approximately 9 in.
 - B) Height to be cut flush with height of fixed (main) Chassis. Approximately 10 1/2 in.
 - C) Use bezel as template to mark location of clearance holes for mounting screws. Drywall wall act as a spacer between chassis and bezel.